

Adapting to change and delivering outcomes

Pelin Fantham
Head of Strategic
Interventions

WORKSAFE

Mahi Haumarū Aotearoa

1

WHAT IS NEW ZEALAND'S HEALTH AND SAFETY AT WORK "REGULATORY SYSTEM"?

It is a system of rules created by law, that requires businesses, with support and involvement from workers, to ensure work is healthy and safe.

2

WHAT IS OUR ROLE IN THE SYSTEM?

We are the primary regulator, and our main role is to influence businesses and workers to meet responsibilities to ensure work is healthy and safe.

HOW DO WE DELIVER OUR ROLE?

We influence in three key ways:

3



ENGAGE

Help businesses and workers to understand how to meet obligations to ensure work is healthy and safe.



ENFORCE

Hold to account those who fail to meet obligations to ensure work is healthy and safe.



SET AND MAINTAIN STANDARDS

Making it clear what is required to meet and operate within regulations for higher risk work.

4

WHERE DO WE FOCUS OUR EFFORT?

Harm doesn't occur equally across the system. Guided by evidence and insights, we focus our effort where it has the biggest and most equitable impact on health and safety outcomes across three types of harm:

ACUTE

Serious harm or death that can occur suddenly.

CHRONIC

Serious harm to health or death that can occur over time.

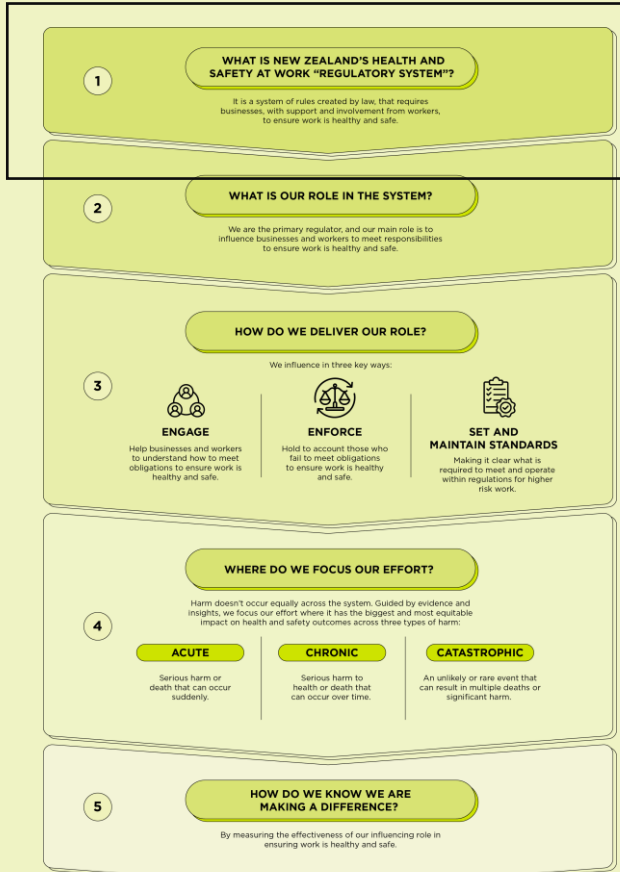
CATASTROPHIC

An unlikely or rare event that can result in multiple deaths or significant harm.

5

HOW DO WE KNOW WE ARE MAKING A DIFFERENCE?

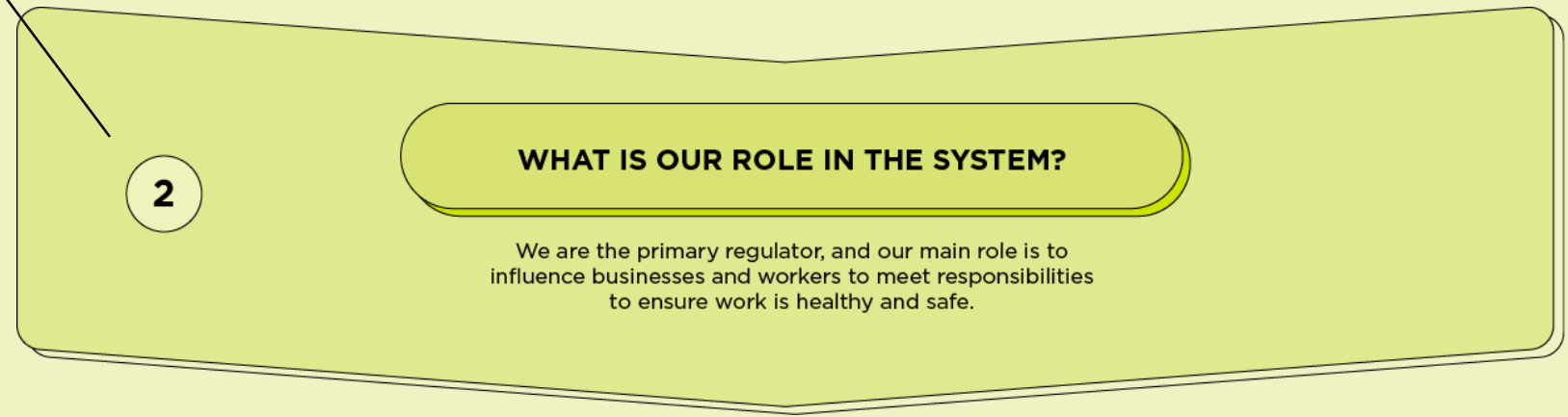
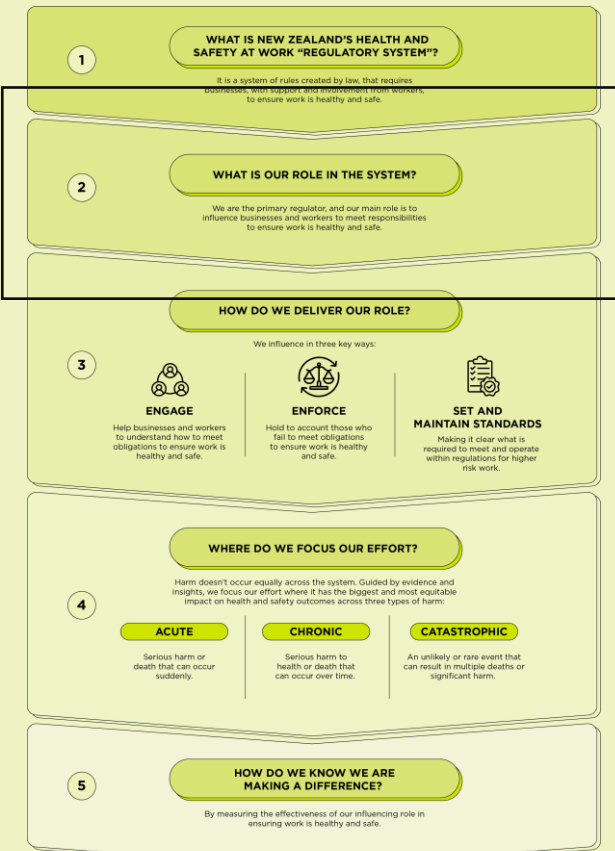
By measuring the effectiveness of our influencing role in ensuring work is healthy and safe.

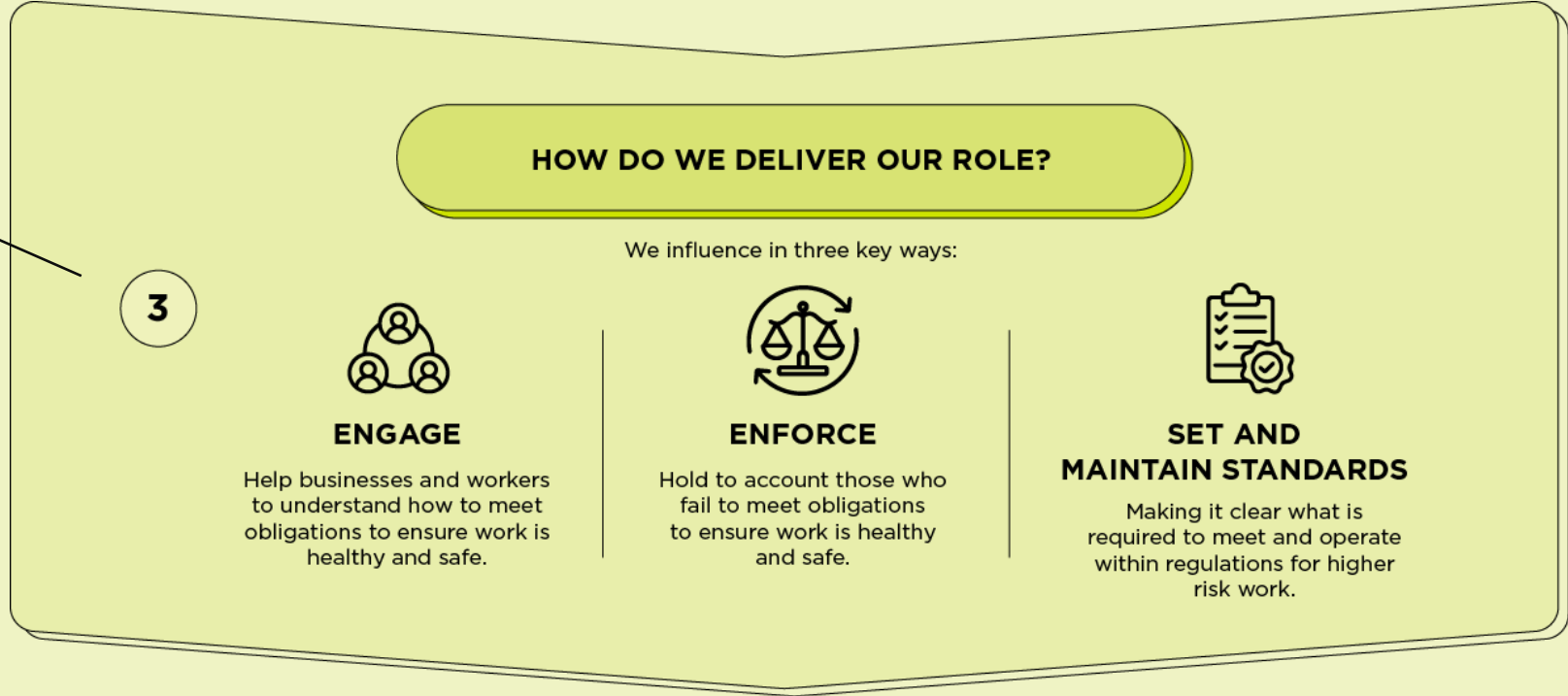
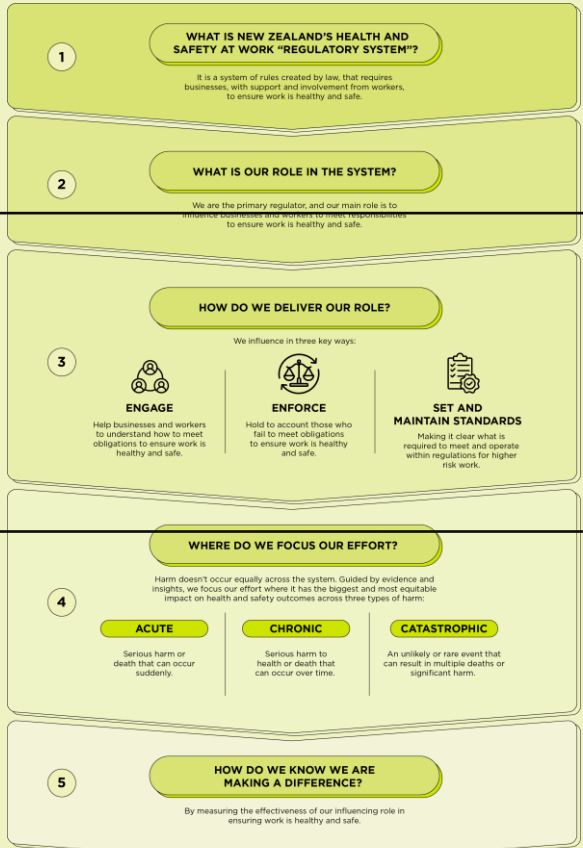


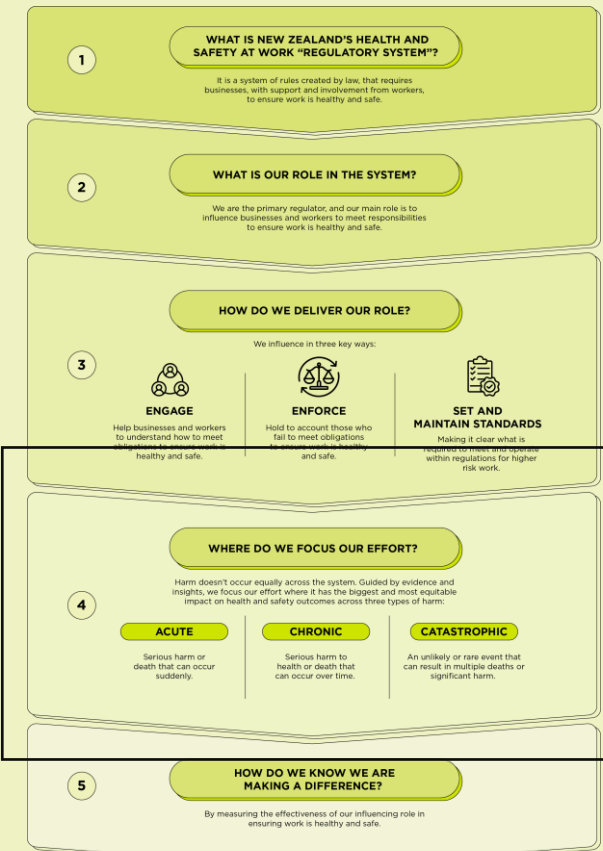
1

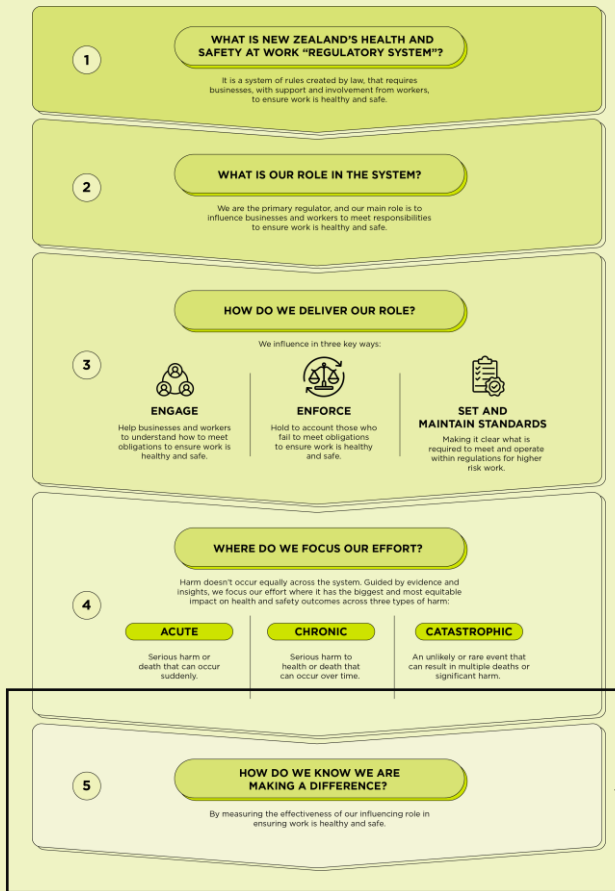
WHAT IS NEW ZEALAND'S HEALTH AND SAFETY AT WORK "REGULATORY SYSTEM"?

It is a system of rules created by law, that requires businesses, with support and involvement from workers, to ensure work is healthy and safe.

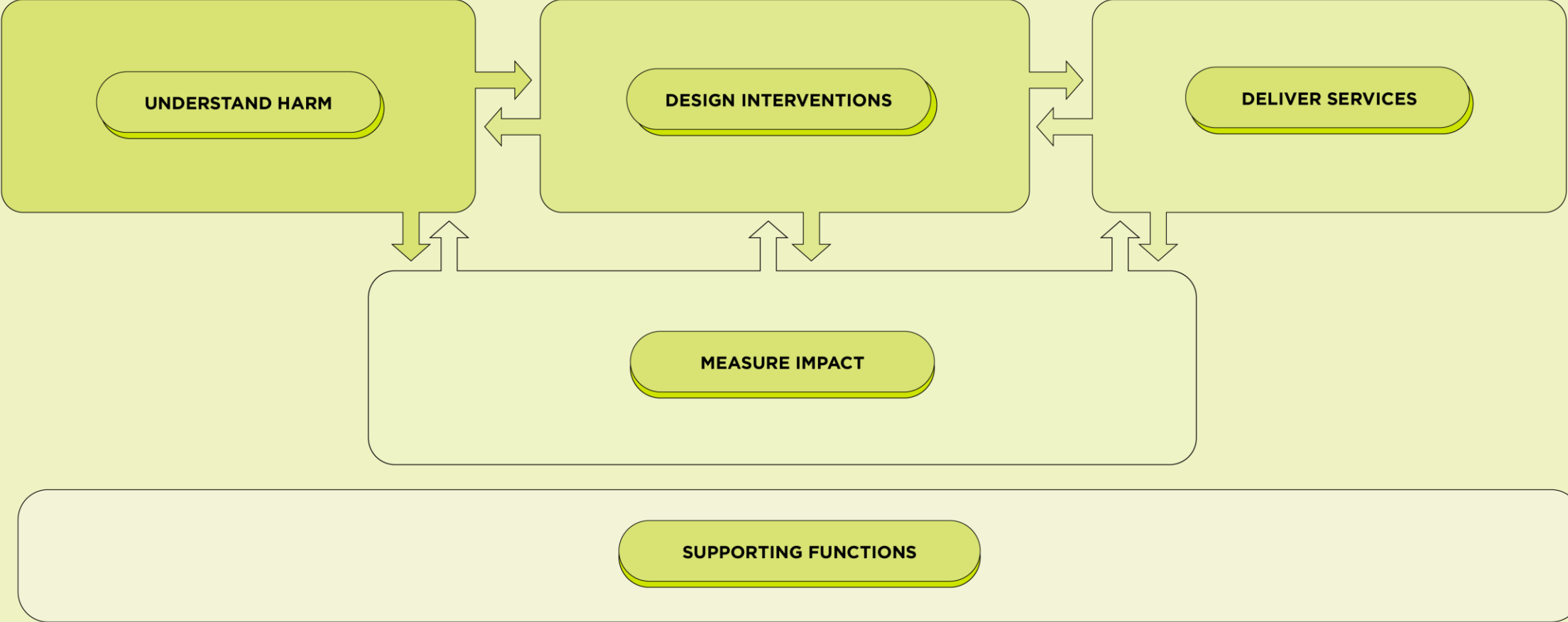








Function over form



Key shifts

- Greater simplicity, clarity, and certainty.
- Targeted focus areas.
- With sector, by sector, for sector.

Ngā mihi nui

WORKSAFE

Mahi Haumarū Aotearoa