

**Bi-Monthly Meeting Minutes**  
**Friday 17<sup>th</sup> May 2023 at 7.30am**  
**Site Safe Office - 67A Seddon Road, Hamilton.**

Present:

Name	Company	✓	Name	Company	✓
Grant Wharry	Downey (Chair)	✓	Karen Goodburn	WSF (Minute Taker)	✓
Dave Sopp	ISS	✓	Lewis Snapes	HCC	X
Jade Thomas	LBL	X	Kerry Page	HCC	✓
Jimmy Phillips	LBL	X	Kaye Byrne	Safewise	X
Kim Wihare	LBL	?	Tracey Murphy	Safewise	X
Kim Clifford	LBL	X	Lesley Bromwich	ACC	✓
Jordan Zohs	Fosters	X	Rodger Hollins	SiteSafe	✓
Hannah Fletcher	Fosters	✓	Stephan Geldenhuys	Site Safe	✓
Leanne Summers	Connell	X	Chris Jobson	Site Safe	
Stephen McClymont	Feisst Group	X	Peter Shilling	WorkSafe	
Galene Rapana	Safety n Action		Sandra Williams	WorkSafe	✓
Mike Barr	Richmond Barr		Donna Mulvey	Schick	
David Reid	Aclub Roofing		Graeme Parlane	Construct Ltd	
Dudley Hoskin	A-Z Scaffolding		Kevin Lindsey	Stride	
Leah Fry	Dempsey Wood		Annette Venter	Coresteel (WCML)	X
Paul Nathan	Roofing Specialists		Kiri Kawhe	JP Marshall	
Cath Reimer	Naylor Love		Stephen Sharpe	Camex	
Justin McNab	Naylor Love	✓	Troy Allen	Camex	
Nigel Kewish	Naylor Love	X	Robyn Hazelwood	Hamilton Asphalts	X
Glyn Hodgson	Naylor Love	X	Craig Johnstone	GAP Roofing	
Sean Smith	Tradestaff		Rob Reid	RSEA Safety (& Apparel)	
Andre Engelbrecht	Lloyds Consulting		Shane Andrews	Pact Steel Ltd	✓
Andrew Mellor	AGM Building Solutions		Ron Buschgens	Site Safe	✓
Shirley Burr(?)	The Concrete People	✓	Ryan Tautari	Downey	✓

Apologies:

Name	Company	Name	Company
Jordan Zohs	Fosters	Tracey Murphy	Sitewise
Darian Hudson	Site Safe	Kaye Burne	Sitewise
Jade Thomas	Livingstone	Kim Clifford	Livingstone
Jimmy Phillips	Livingstone	Robyn Hazelwood	Hamilton Asphalts
Stephen McClymont	Feisst Group	Leanne Summers	Connell
Glyn Hodgson	Naylor Love	Gary Lightfoot	WSF
Lewis Snapes	HCC	Kim Wihare	Livingstone
Annette Venter	CoreSteel	Nigel Kewish	Naylor Love

Apologies Accepted

**Welcome**

- Welcome to all
- Health & Safety – SiteSafe Venue

**Minutes of Previous Meeting – 23-02-24**

Matters Arising?

- None

## **ACC Update – Lesley Bromwich**

Winter sports campaign out with tips & resources

<https://www.acc.co.nz/preventing-injury/sport-recreation#handy-hints-for-the-sports-field>

experience ratings come out before invoices – any entity that pay \$10K+ in levies

<https://www.acc.co.nz/for-business/your-work-levy-and-experience-rating/understanding-the-experience-rating-programme>

Levy Guide



quick-guide-intro  
duction-to-ACC-levies

MyACC for Business – if you are not getting information you require – get permission from the main user

A lot of GP's changing Fit for selected work to Fully unfit, depending on alternative duties available

Updated Definitions



Definitions from  
the Accident Compe

## **WorkSafe Update – Sandra Williams**

Not much to report – all still going along as usual

Construction – still main focus

New strategy to be announced soon

## **SiteSafe Update – Rodger Hollins**

Feedback forms, please fill in the attached feedback form and send to Rodger Hollins



SiteSafelmpactSurv  
ey\_A4.pdf

Good feedback as well as bad feedback assists with improvements

## **Hamilton City Council Updates – Lewis Snipes / Kerry Page**

Report in two electrical incidents where final testing was not done correctly, and on-going maintenance was not being done.

Resulting in two near misses of people being shocked.

When you employ experts to do work, you expect them to be competent and trained to do the work correctly.

## **Focus / Presentation**

O Construction Health and Safety NZ (CHASNZ) presentation on construction-based initiatives

Presented by Jon Harper – Slade from CHASNZ along with other team members

**Resources:**

<https://chasnz.org/resources/>

<https://chasnz.org/data-tools-and-insights/>

<https://www.csr.colorado.edu/quality-of-safety-leading-indicators-scorecards>

<https://www.csr.colorado.edu/field-guides> (has the engagement scorecards)

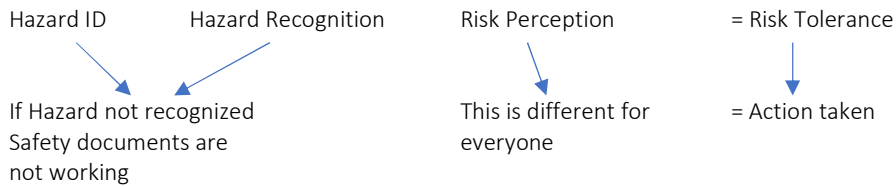
## **Energy-Based Hazard Recognition:**

Safety Research – focus on work to create safety

Energy-based safety – focusses on the Shit that can kill you (Stcky)

Risk Management – is for Managers

Energy-based safety – for Frontline workers



45% of risks on site are identified  
 35% are missed by Cognitive (brain) blind spots  
 20% were not present immediately or were not easy to identify or were not obvious

Our brains pick up on gravity / machinery / traffic etc – as they are more obvious.  
 We miss - pressure / chemical / mechanical / temperature

Perception is also based on our emotions – e.g.  
 At the top of 50ft building, we know it is unsafe  
 At bottom of 20ft hole we may feel safer touching a sheet sand wall

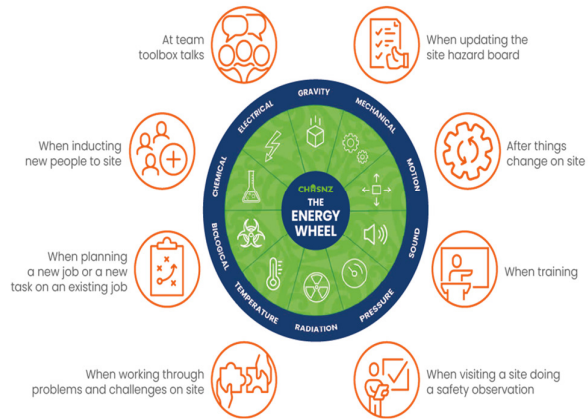
Easy to see vs overlooked  
 Emotions trigger the fight or flight reflex – so we see gravity and motion hazards easier  
 Chemical / pressure etc are new hazards and are not immediately perceived as dangerous  
 Different parts of brain are used.

The Energy wheel helps find all the overlooked hazards.  
 It also draws knowledge out of foremen and supervisors enabling meaningful safety conversations

### What is the Energy Wheel?

The Energy Wheel is a simple tool that we can use when talking about hazards on site that has the potential to dramatically increase their identification. It is estimated that up to 30% more hazards have been identified by those using it. The Energy Wheel is a simple diagram that shows ten different types of energy. Each type of energy can be associated with many of the different hazards found on a building site. It makes hazard identification easier and more accurate so that those supervising and working on site can come up with better ways of dealing with the hazard.

**When to use it?** You can use it anytime but typically it is used:



The energy wheel helps you focus on the important stuff, the Sticky Stuff.

More was discussed around using HIRA to determine exposure rate (diff between the hazards and the direct controls)

Present & effective – does the control:

- 1 – Target the energy at the source ?
- 2 – put a barrier between the energy & the person?
- 3 – is the control Human error Resistant?

If any of the above are not met, there is an exposure.

To move on, you can agree to alternative controls, but these will need to be supervised as they are not direct controls

Supervisors & Foremen – are critical roles, they are influencers  
 Track the quality of their roles and train them to better where they have weaknesses  
 One size does not fit all

Video training is better as it engages attention and gets same knowledge across as a face to face trainer

### General Business / Around the Room

- Pink Shirt Day – resources – Compliments poster & more
  - <https://pinkshirtday.org.nz/resources>

- Feedback at next meeting
- Environmental / Sustainability / Recycling – SARNZ Workshop
  - To be planned
  - If you want to be part of the planning meeting let Dave Sopp know - David Sopp [david.sopp@iss.co.nz](mailto:david.sopp@iss.co.nz)
- Brent Sutton NZISM BOP full day presentations - \$80 members / \$100 non-members
  - 29<sup>th</sup> May – Whakatane – ticket link below
  - <https://www.nzism.org/book/4176c0a8-0ab5-4281-b7bc-6781eae07e3b/>
- Please see link below to the short video clips on understanding brain function I discussed for inclusion in the minutes.  
[Brain Animation Series - Take a tour of your brain - Sentis](#)

## Next meeting

Venue: SiteSafe, 67 Seddon Road, Frankton, Hamilton  
Date & Time: 22<sup>nd</sup> June 2024

Future Meetings / upcoming Focus Presentations:

- 2024 meeting dates booked.
  - August 23rd
  - October 18th
  - December 6th
  -

Meeting Closed at: 10.30am