

# How to download and save the PDF SSSP

The Red (Whero), Green (Kakakiri) and Yellow (Kowjai) SSSP is available as an interactive PDF. This ensures the SSSP is used consistently across the industry.

## Step 1: Select the Plain Safe Guide that's right for you from [www.sitesafe.org.nz/sssp](http://www.sitesafe.org.nz/sssp)

Download the Plain Safe Guide that's right for you here:



Use the RED SSSP pack if **YOU** are:

- › effectively the **Main Contractor** (PCBU 1)
- › working under your **own agreement** / contract with your client
- › working under your **own Health and Safety** Management Systems, Processes and Procedures
- › providing evidence of your **own due diligence**

Click [here](#) to access the Red pack



Use the GREEN SSSP pack if **YOU** are:

- › **directly contracted** to the Main Contractor (PCBU 1)
- › working **under the contractual agreement** of the Main Contractor (PCBU 1)
- › working **under Health and Safety** Management Systems, Processes and Procedures of the Main Contractor (PCBU 1)
- › required to **provide evidence of due diligence** to the Main Contractor (PCBU 1)

Click [here](#) to access the Green pack



Use the YELLOW SSSP pack if **YOU** are:

- › a business enterprise with your **own internal Health and Safety Management Systems, Processes and Procedures**
- › **working 'parallel'** to the Main Contractor (PCBU 1)
- › working under your **own Health and Safety** Management Systems, Processes and Procedures while **abiding by the Health and Safety** Management Systems, Processes and Procedures of the Main Contractor (PCBU 1)

Click [here](#) to access the Yellow pack

## Whero (Red) Site-Specific Safety Plan (SSSP)

Welcome to the Whero (Red) Plain Safe: a straight-talking guide to the Site-Specific Safety Plan (SSSP).

We've produced this guide for the Whero (Red) SSSP pack, to help make site-specific health and safety requirements easier for you to meet.

In your pack are all of the forms you'll need to show due diligence and help meet your compliance requirements. The forms can be filled in electronically and emailed directly to interested parties or can be printed, filled in manually and either scanned and emailed, or provided in hard copy if required.



### Plain Safe - A straight-talking guide to completing the Whero (Red) Site-Specific Safety Plan (SSSP)

This guide to the Whero (Red) SSSP pack explains the specific forms that are included in your pack and provides simple, useful advice on the processes you need to follow to establish and maintain a safe construction site.

Download the Plain Safe Guide [here](#).



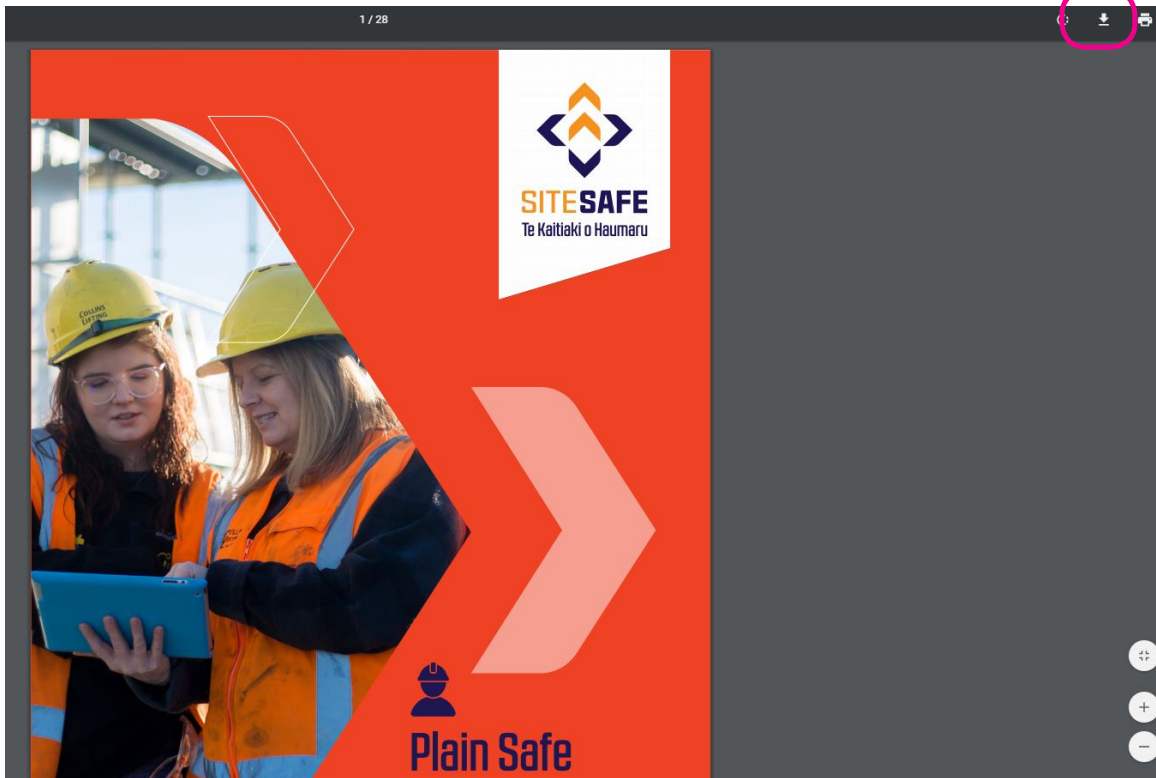
### Whero (Red) Site-Specific Safety Plan (SSSP)

All the SSSP forms included in your pack are designed to support you in showing evidence of due diligence and health and safety compliance.

Download the form pack [here](#).

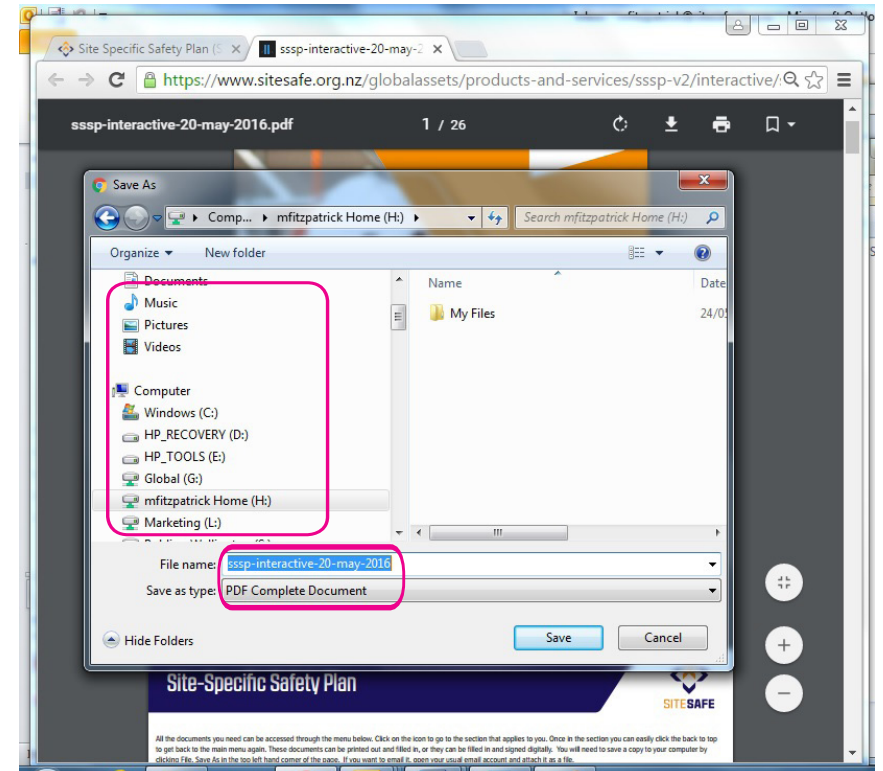
*When you click here, it will open automatically in a new tab in your internet browser. DON'T start entering information at this stage. Click on the download button then save to your computer*

## Step 2: Download the PDF file



*Click the download button then save to your computer.*

## Step 3: Save the PDF to your computer



*You can save and/or rename the file name to your desktop, your hard drive, or on your company server.*

*Once you've saved the file to your computer, you are now ready to edit the form. Open the file using Acrobat Reader., you can make and save your changes easily. Anytime through your edits you may click save. The changes will be saved on the form where the file was saved on your computer.*

*If you don't have Acrobat Reader, you can download it for free from [www.get.adobe.com/reader/](http://www.get.adobe.com/reader/)*